

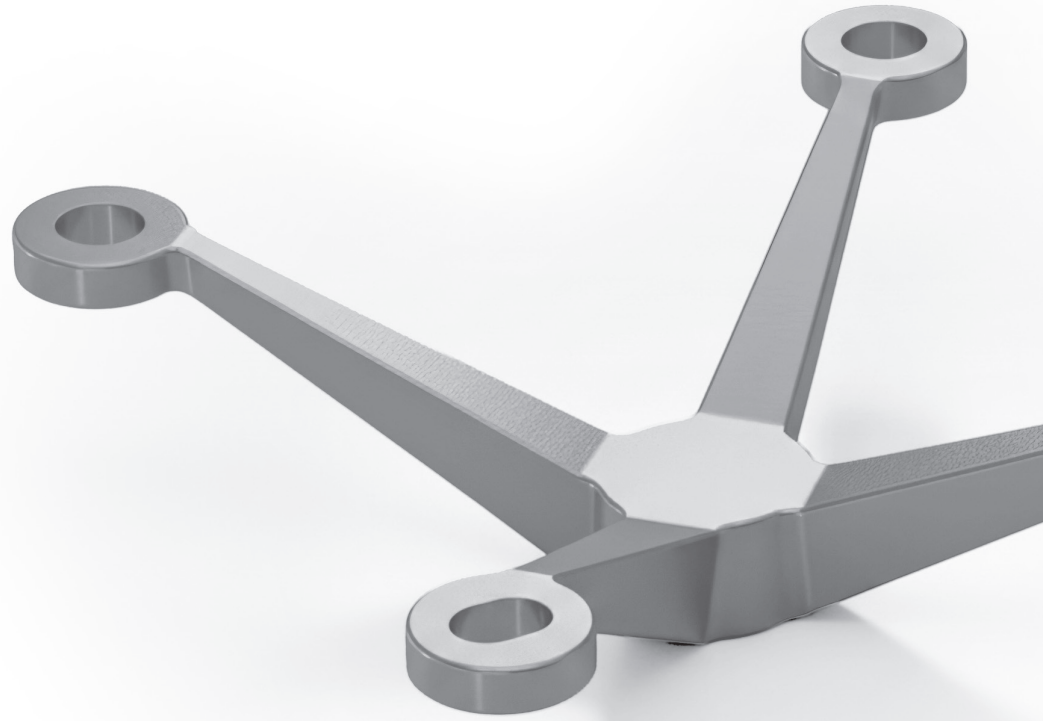
Glass Spider Fittings

HD SERIES





Images are for illustration purposes only. Consult with your local building authority.



Glass Spider Fittings - HD SERIES

Our HD Series Glass Spider Fittings are made of high-strength 2205 stainless steel and are designed to secure glass panels while providing high structural support. These fittings are engineered to support modern architectural glazing systems for both interior and exterior applications, while maintaining a clean and unobtrusive appearance.

Common Applications

- **Glass Canopies & Awnings:** Durable overhead protection with a streamlined appearance.
- **Structural Glass Facades:** Strong, minimal hardware solutions for exterior glass walls.
- **Glass Partitions:** Interior dividers that maintain an open, uninterrupted layout.

Spider Fittings - HD Series

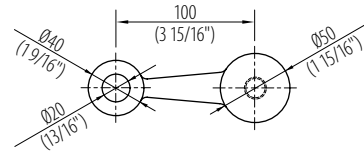
DUPLEX
2205
Stainless Steel

S
Satin
Stainless
Steel

- Available configurations: Single Arm, Double Arm, Double Arm "V", 3-Way Arm, 4-Way Arm.
- M16 x 2.0 tapped holes for fastening to the structure.
- Provides an overall offset of 70mm [2 3/4"].
- Material is Duplex 2205 Ultra Marine-Grade Stainless Steel.

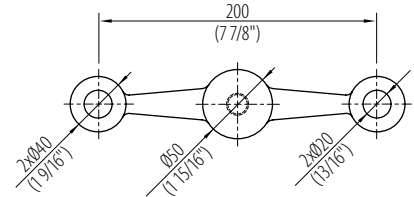
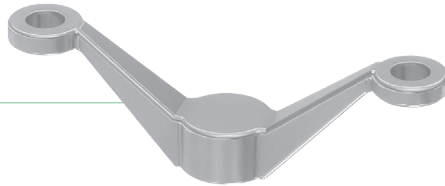
Single Arm

SSGWS201S



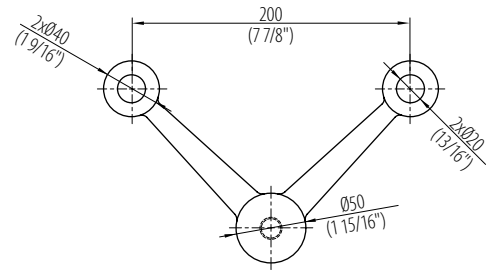
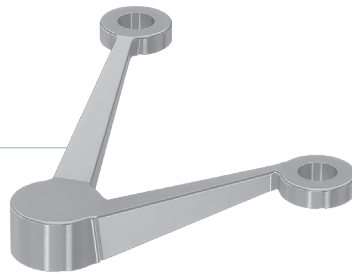
Double Arm

SSGWS202S



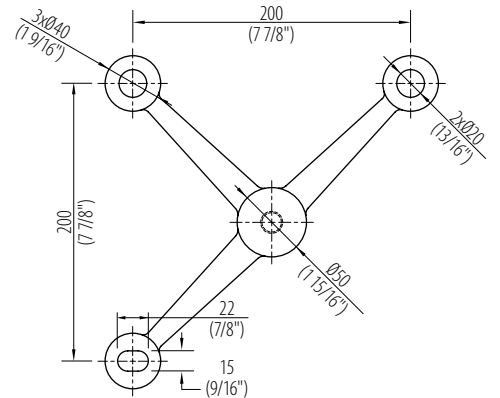
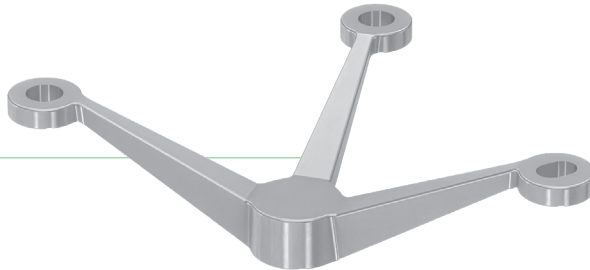
Double Arm "V"

SSGWS202VS



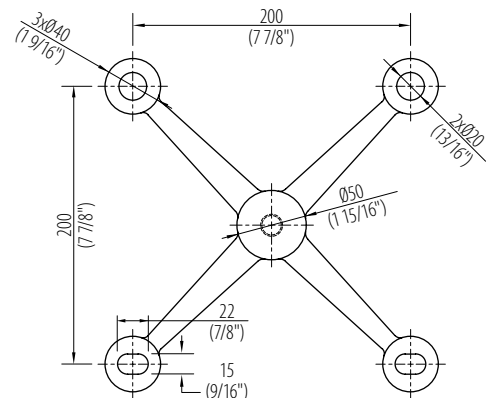
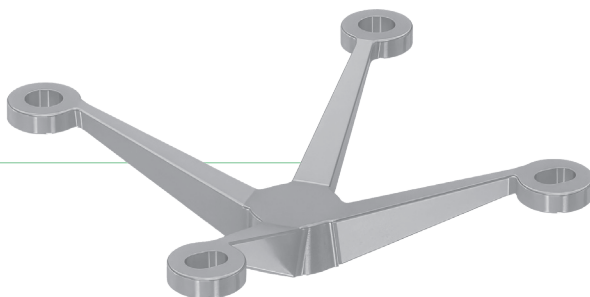
3-Way Arm

SSGWS203S



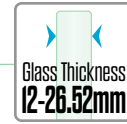
4-Way Arm

SSGWS204S



Spider Glass Connectors - HD Series

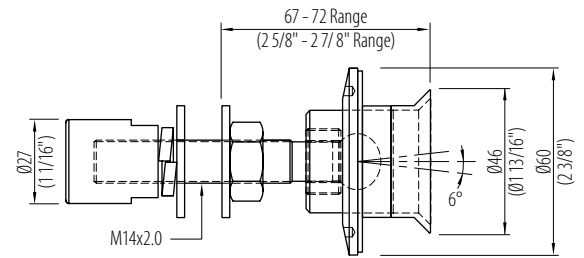
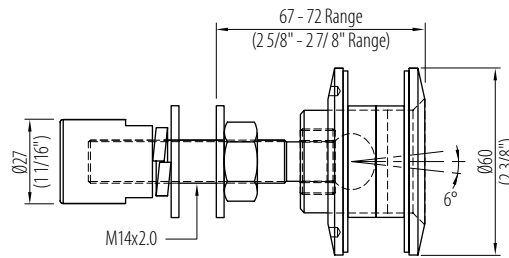
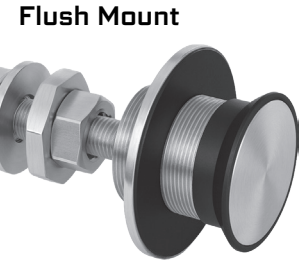
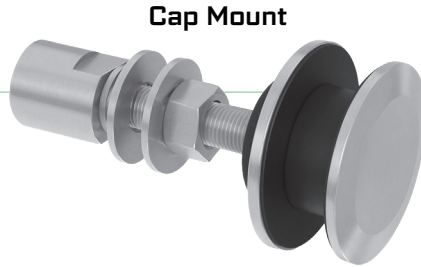
- Available connector types: Fixed connector and swivel connector.
- M14 connector thread size.
- Glass hole size: $\varnothing 36.5\text{mm}$ ($\varnothing 1\ 7/16''$)
- Material is SS316.



Swivel Connector

SSGWS214S

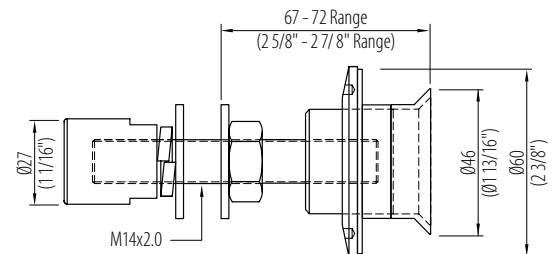
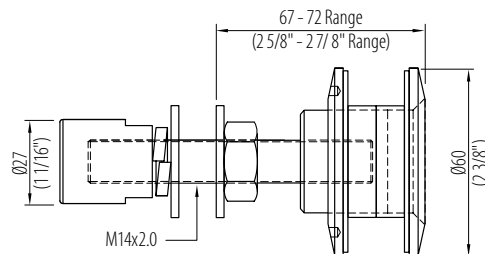
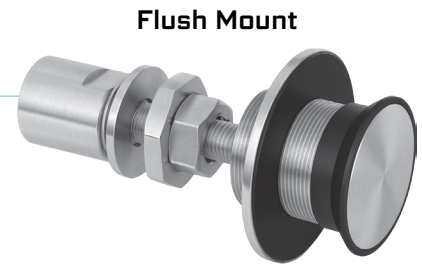
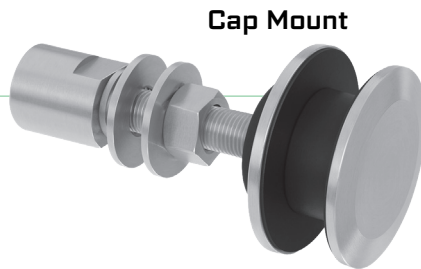
Includes Cap Mount and Flush Mount options.



Fixed Connector

SSGWS215S

Includes Cap Mount and Flush Mount options.

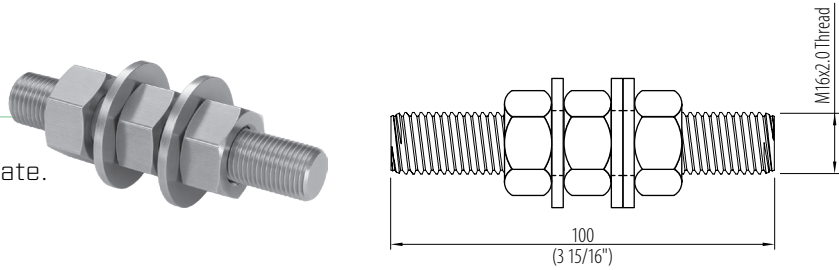


Components & Tools

M16 Connector

SSGWS216S

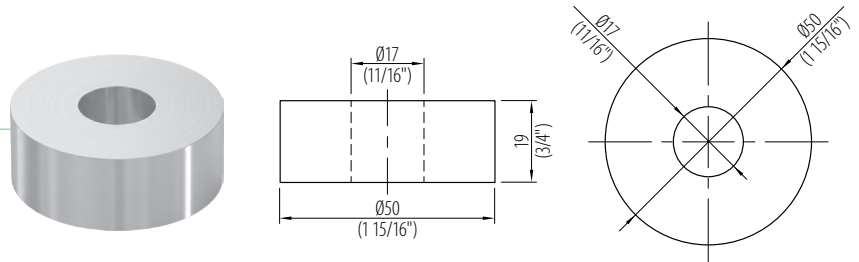
- Used to connect Spider Fitting to substrate.
- Material is SS316.



Spacer (50 x 19mm)

SSGWS219S

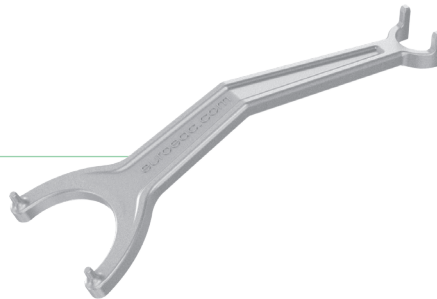
- Used to angle glass panels by raising the spider fittings.
- Material is SS316.



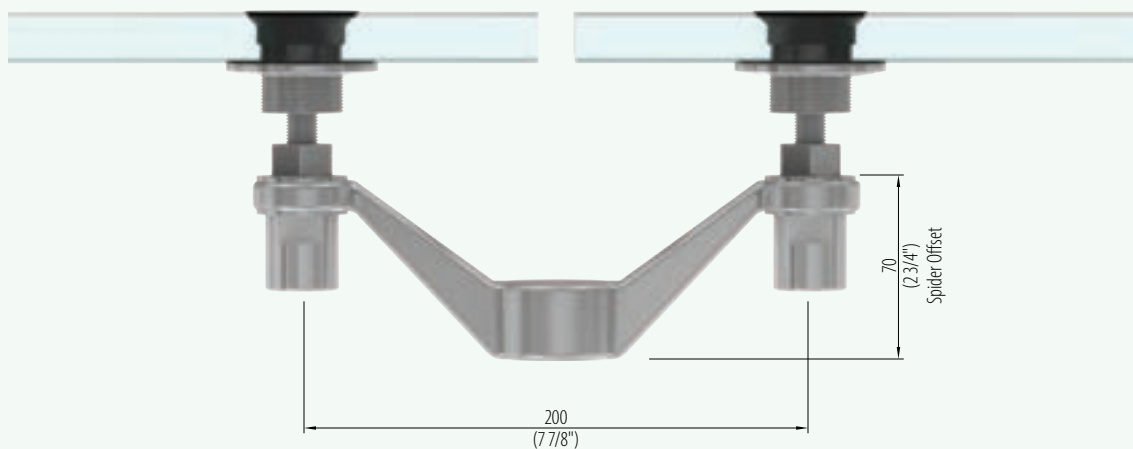
Spider Fitting Wrench

SSGWS220

- Used to install both swivel and fixed Spider Glass Connectors.



Assembled Dimensions

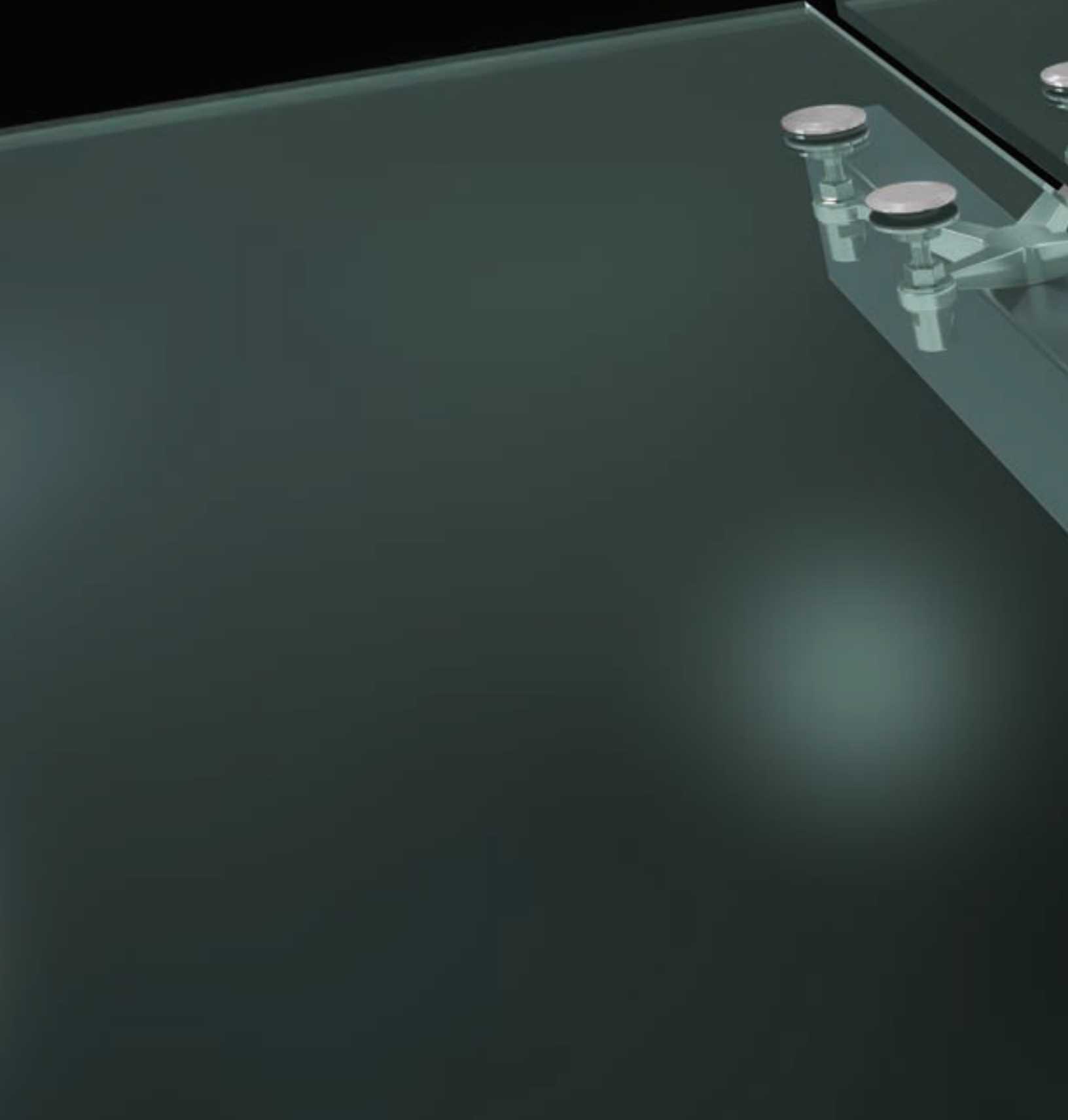




— THE —
DAILY GRIND
COFFEE CO.

— THE —
DAILY GRIND
COFFEE CO.

Images are for illustration purposes only. Consult with your local building authority.



DISCLAIMER: Euro Architectural Components carefully reviewed to ensure that the content in this catalogue was accurate at the time of print. We are not responsible for misinformation due to human error. Images or colours may not be exact due to rendering, photographic, or printing procedures. Consult your local authorities to ensure your design complies with all building code requirements. For our complete terms & conditions scan here, or copy the following link: <https://euroeac.com/terms-conditions/>.