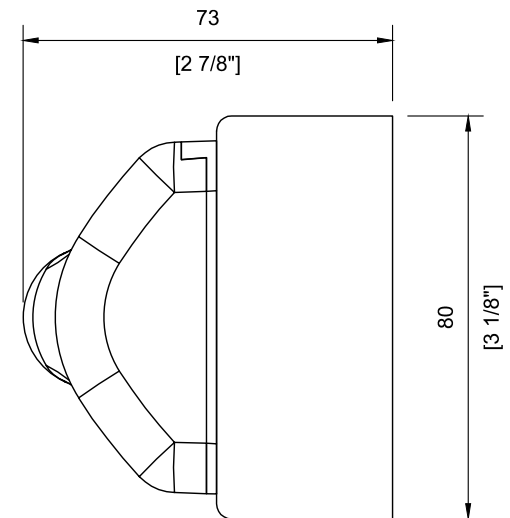
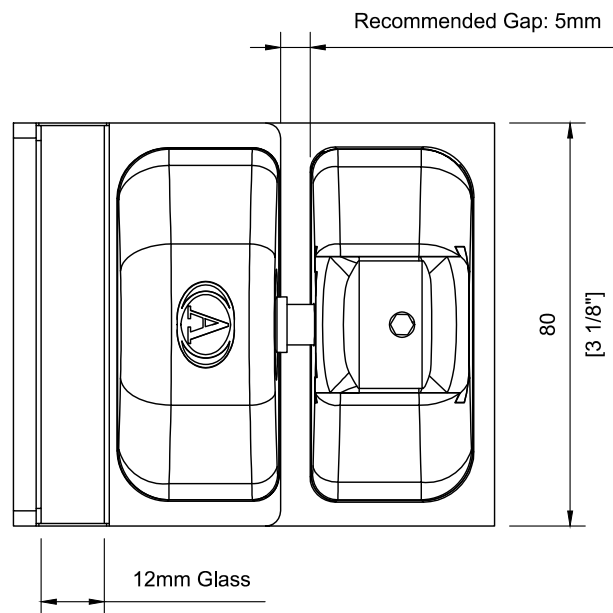
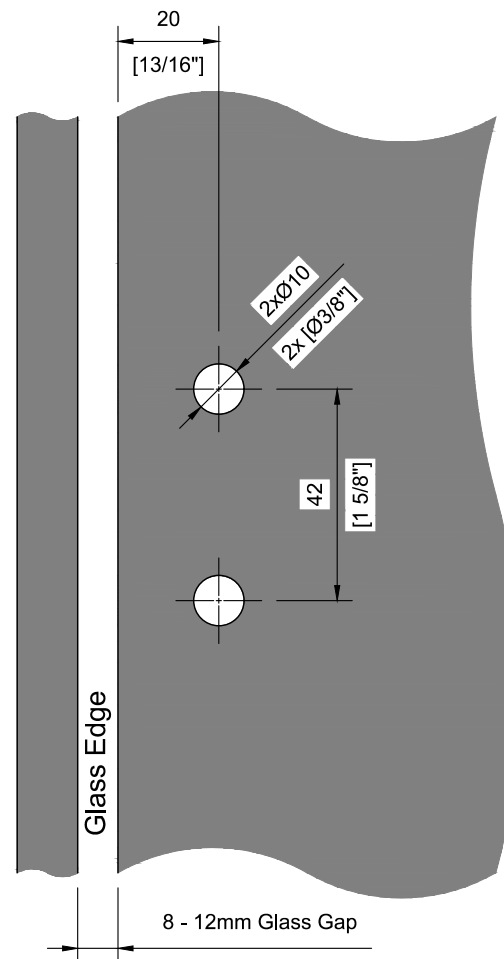


- Available in traditional polymer cap, lockable and full stainless steel variety.
- Made of 2205 Stainless Steel to offer strength and better corrosion resistance.
- Suits 8mm, 10mm and 12mm gate panel and 12mm latch panel.
- Hidden fixing feature makes a neat and stylish look.
- No hole required in the latch panel.
- Self-latching when gate is closed.
- Compatible with Series 1 Gate Panel - #GGT 124632G1





HOLE IN THE GLASS