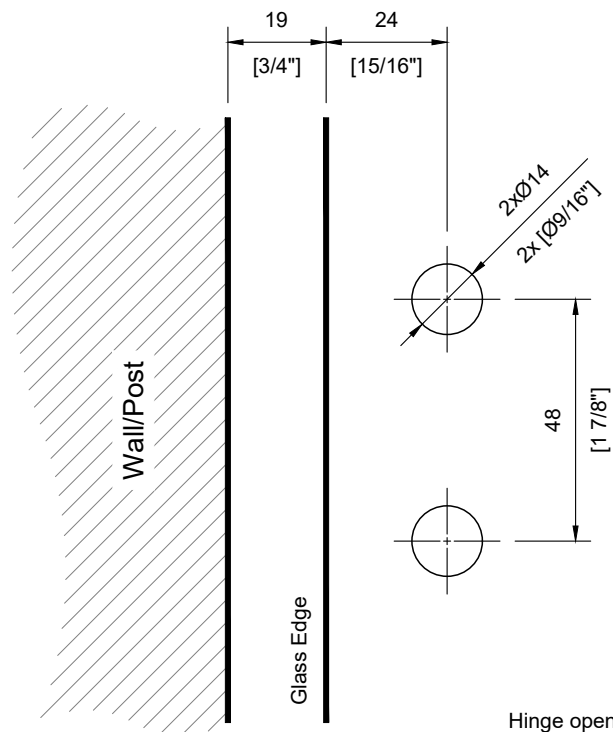
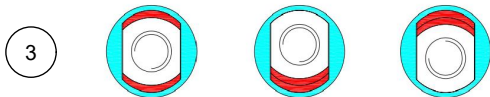
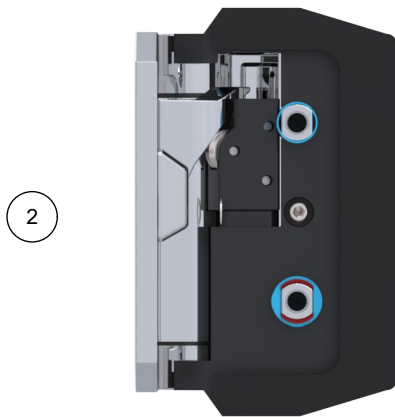


Installation Instructions for Series 200 Soft Close Hinge

Glass to Wall/Post Soft Close Hinge - #SSPFH200W_ & #SSPFH200SP_

STEP 1A: Through Holes

1. Align the gate panel with the hinge panel.
2. Remove binding plates and insert hinges through the holes.
3. Use arched packers to adjust for any gaps or misalignments.
4. Secure binding plates once the hinges are properly positioned.

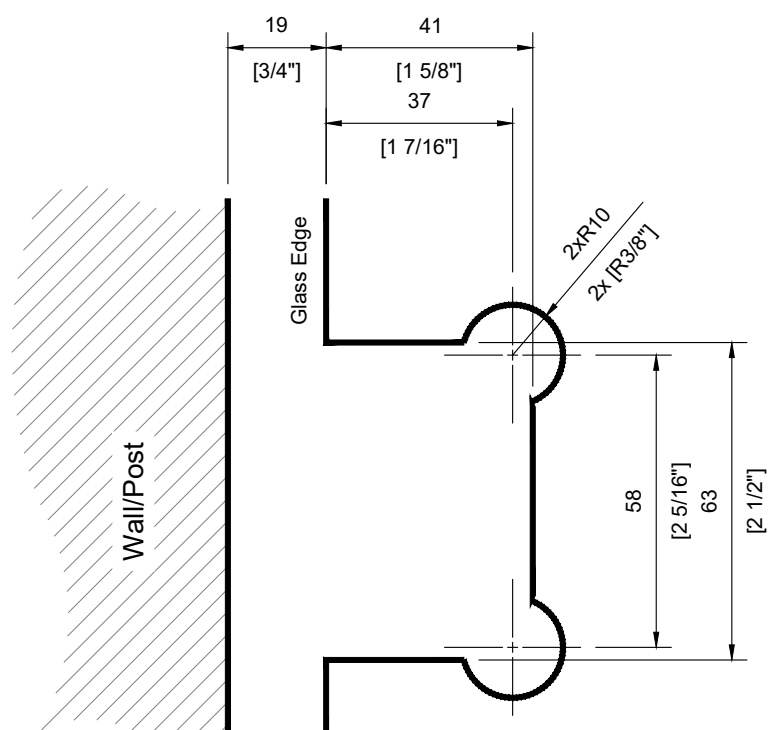
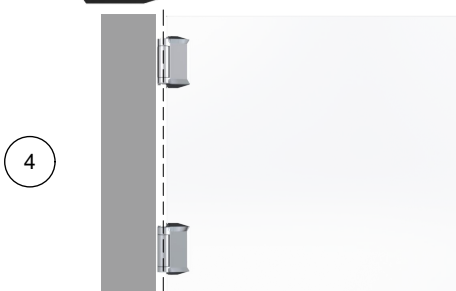


Hinge opens up to 95°

Hole in the Glass

STEP 1B: Through Cutouts

1. Align gate panel with hinge panel.
2. Use cutout adaptors and flat packers to fill gaps and adjust height.
3. Secure binding plates and tighten the sliding block using the customized Allen key.
4. Hinges must be installed along the same axis to function correctly and ensure durability.



Hinge opens up to 95°

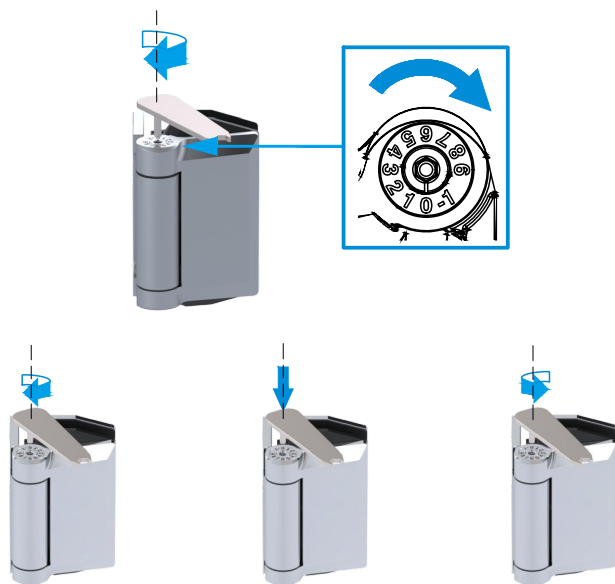
Cut-out in the Glass

Installation Instructions for Series 200 Soft Close Hinge

Glass to Wall/Post Soft Close Hinge - #SSPFH200W_ & #SSPFH200SP_

STEP 2: Adjusting Spring Tension

- Insert an Allen key into the adjustment slot.
- Turn clockwise to increase tension or counterclockwise to decrease.
- Start with a tension setting of 4, adjusting both hinges simultaneously.
- A built-in spring protection mechanism prevents over-tensioning beyond level 7.



STEP 3: Adjusting Damper Stroke

- Turn the adjustment screw clockwise to increase closing speed.
- Turn counterclockwise to slow down closing speed.
- This mechanism is for fine-tuning only; major adjustments should be made using the spring tension setting.

Use Allen Key No. 2.



Faster



Slower

Step 4: Safety Cap Installation

- If hinge spacing is less than 1200mm [47 1/4"], a safety cap must be installed to prevent climbing.
- Check with local pool fencing by-law for more specific details.



Step 5: Proper Fastening and Cleaning

- Avoid excessive torque when fastening screws to prevent damage.
- For black finishes, do not use acidic or alkaline cleaning agents to prevent surface degradation.
- Regularly check for alignment and tighten screws as needed.