

INSTALLATION INSTRUCTIONS

TILT-LOCK Side Mount Support for Square Posts

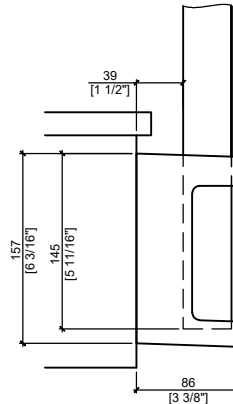
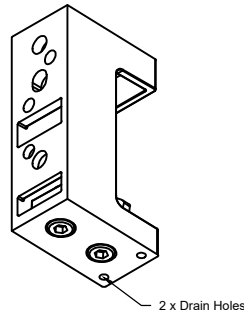
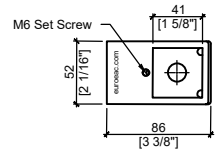
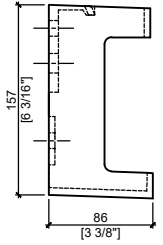
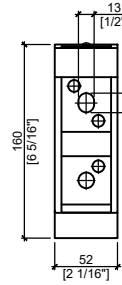
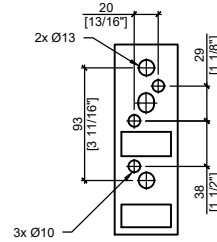
SSUC702S (Satin)
SSUC702B (Black)



127A Aviva Park Dr., Woodbridge, ON, CANADA
www.euroeac.com Toll Free: 1-800-465-7143

Product Features:

- Engineered for Interior and Exterior applications
- Applicable for Landing and Stair Railing installations
- Solid cast material Duplex 2205 Ultra Marine-Grade Stainless Steel in Satin and Powder Coated Black finish.
- Superior corrosion resistance as well as more tensile strength than 316 Grade Stainless Steel.
- Unique grip locking mechanism that secures the inner sleeve of the post
- The grip allows $\pm 3^\circ$ forward and backward tilt adjustments of the post by sliding mechanism at post bottom.
- Sloped bottom design with drain holes away from the wall for positive water drainage.
- Multiple pre-drilled holes suit 3x 1/2" or M12 Fasteners for concrete and 4x 3/8" or M10 Fasteners for wood application.
- Designed by EAC and engineered for the National Building Code of Canada.
- Patent Pending in Canada and U.S.



Fastening Possibilities:

For wood:

- 3/8" or M10 Lag Bolt into 4x Ø10 holes

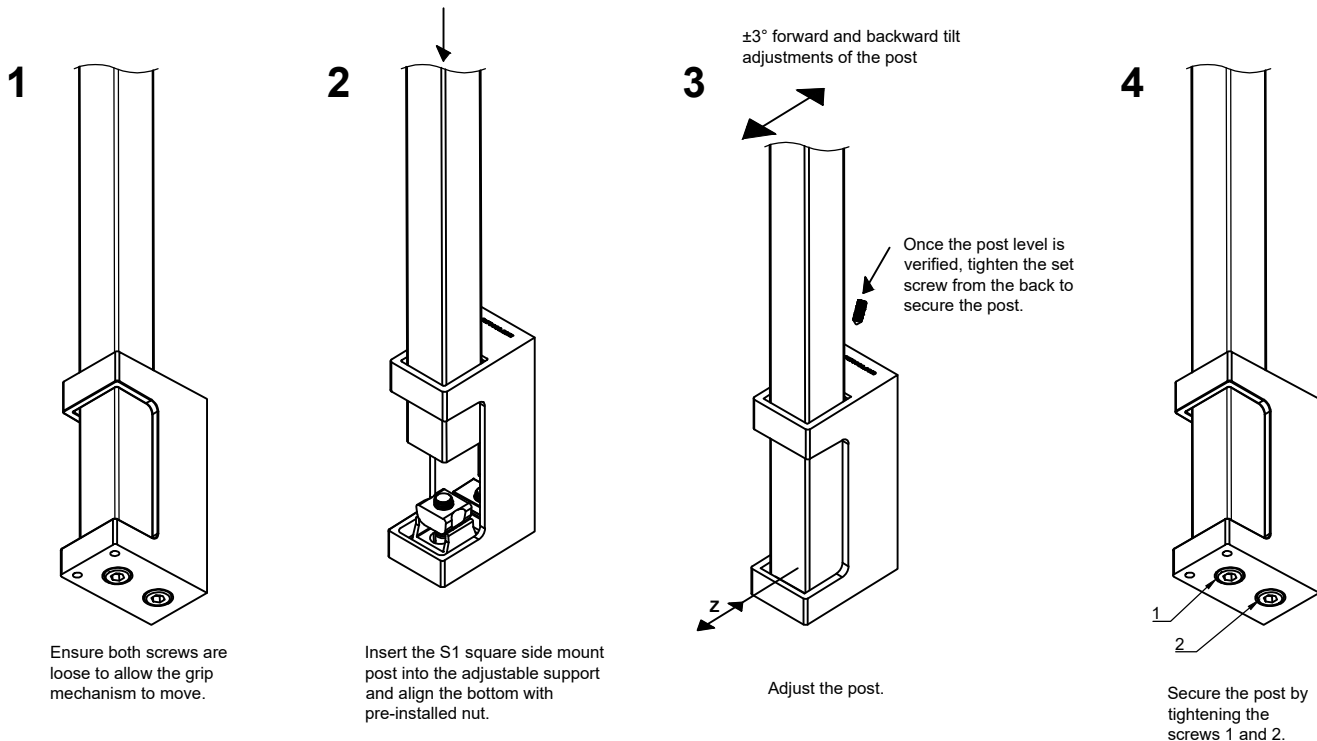
For concrete:

- 1/2" or M12 Wedge/Sleeve Anchor or Threaded Rod into 2x Ø13 holes and slotted hole

Note:

Fasteners are specified by installers to comply with the job site conditions.

Installation Steps



Ensure both screws are loose to allow the grip mechanism to move.

Insert the S1 square side mount post into the adjustable support and align the bottom with pre-installed nut.

Adjust the post.

Secure the post by tightening the screws 1 and 2.