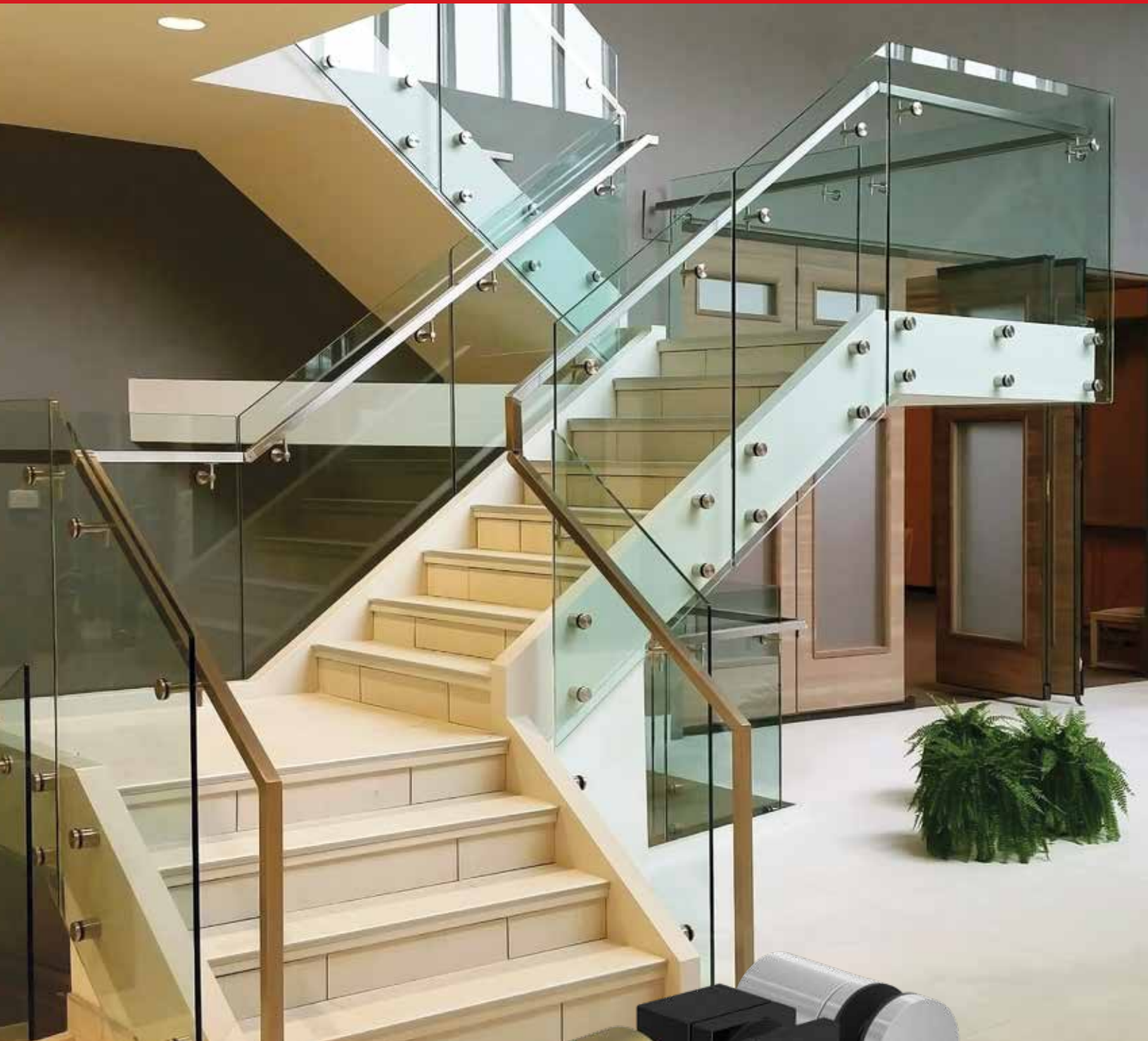


TYLT-LOCK™ Adjustable
Glass
Standoffs
Tilt Adjustable Glass Railing Technology

LOCKABLE T3 SERIES




euro
euroeac.com

LOCKABLE T3 SERIES



Our **TILT-LOCK™** Adjustable Glass Standoffs allow easy and precise vertical alignment of glass panels. After the glass panel is set in place, it can be vertically aligned from the front using our Adjustable Standoff Tool by tightening or loosening the Telescope portion of the standoff.

Our **TILT-LOCK™** Adjustable Glass Standoffs are available in 1 1/2" and 2" diameters in various lengths. All sizes are available in **Satin (S)**, with some sizes also available in **Powder Coated Satin Black (B)**, **PVD Brushed Graphite Black (GB)**, **PVD Matte Black (MB)** and **PVD Brushed Gold (G)** finishes. These standoffs feature an internal locking mechanism with a clean design that conceals the threads in the spacer.

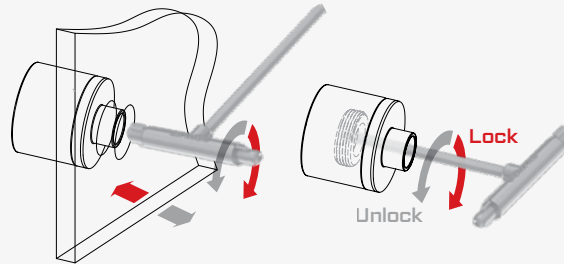
- **NEW** increased range of glass sizes from 3/8" - 7/8", suitable for commercial and residential projects.
- **Locking System** secures standoff in adjusted position, preventing misalignment once the cap is assembled or disassembled.
- **Adjustability** enables a tilt range of +/-3° for glass railings, while our T3 slotted model's slot hole offers both vertical and horizontal adjustment, allowing for complete **3D adjustability**.
- **Duplex 2205** Ultra Marine Grade Stainless Steel, solid material.
- **Designed by EURO** and fully engineered for the National Building Code of Canada.
- **Cap and Threaded Rod** come as one cast piece for superior strength.
- **Patented in Canada (313 8408), and U.S. (118 41043).**

Adjustable Standoff Tool

SSJ11 - This Tool is designed by **EURO** to facilitate adjustments of our Adjustable Glass Standoffs. The 2 rounded ends are for adjusting 1 1/2" and 2" diameters respectively. The Allen key is used to lock and secure the standoffs in place. Sold Separately.



3D Adjustability (T3 MODELS ONLY)



1. Adjust horizontally side to side and vertically up and down.

2. Adjust forward or backward to allow a $\pm 3^\circ$ adjustment.

3. Lock into place.

euroeac.com

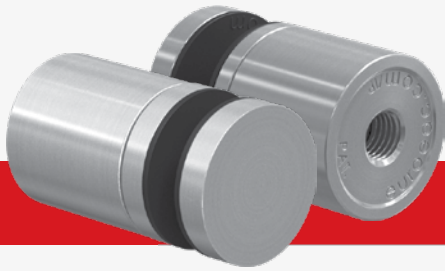


More standoffs online



T3 installation video

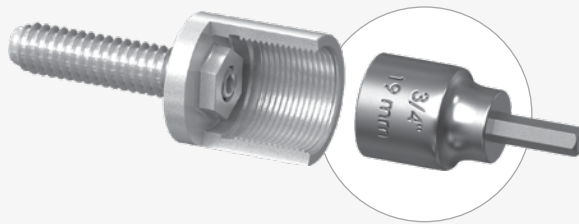
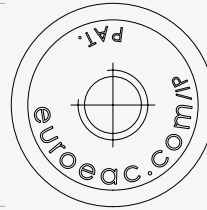
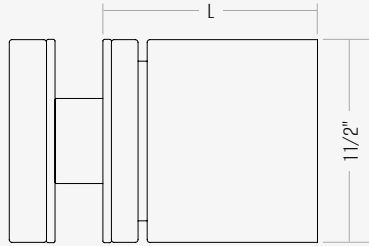
Please direct questions to:
engineering@euroeac.com



T3T

TAPPED ROUND

Our updated **TILT-LOCK™** Adjustable Glass Standoffs T3T Tapped Series features a revised tapped thread for simpler and more affordable fastening options.



Achieve quick, one-step installation for our T3T Standoffs by utilizing our dedicated Socket tool **HBDS34**. Sold Separately.



1 1/2" Diameter

PART #	L (Min. - Max. Length)	Glass Hole Size	Recommended Fastener	Available Finish
SSJ112112T	1 1/2" - 1 3/4"	3/4"	(1/2")	S/B
SSJ1122T	2" - 2 3/8"	3/4"	(1/2")	S/B

APPLICATION & FASTENING OPTIONS FOR T3T

CONCRETE APPLICATION

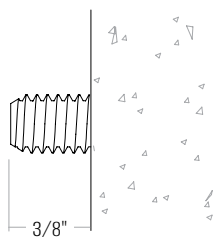
1 1/2" Diameter

Fastening Option A: Threaded Rod with Epoxy

- SSKF121** SS threaded rods 1/2" x 5"
- FR5-10MX** FLO-ROK® epoxy (Fills 28 holes 9/16" x 4 1/2")

Fastening Option B: Wedge Anchors

- ISS12334** SS wedge anchor 1/2" x 3 3/4"
- ISS12412** SS wedge anchor 1/2" x 4 1/2"

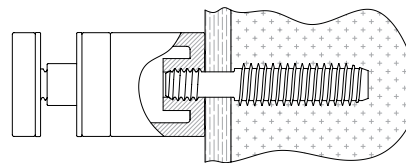


NOTE 1: Length of threaded rods or wedge anchors should protrude 3/8" from the surface.

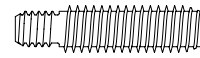
WOOD APPLICATION

1 1/2" Diameter

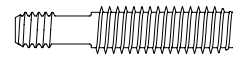
1/2" SS EURO Hanger Bolts



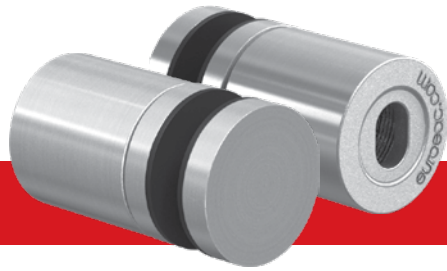
SSASHANG212S
Exposed Wood



SSASHANG2314S
Drywall

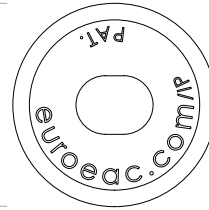
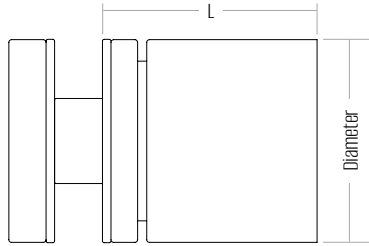


NOTE 2: Regular 1/2" hanger bolts or 1/2" threaded rods fit in T3T Standoffs based on application by installers. Pilot hole for Euro hanger bolts: Softwood: 1/2" • Hardwood: 3/64"



T3

SLOTTED ROUND



1 1/2" Diameter

PART #	L (Min. - Max. Length)	Glass Hole Size	Recommended Fastener	Available Finish
SSJ12114	1 1/4" - 1 1/2"	3/4"	M10 (3/8")	S
SSJ12112	1 1/2" - 1 3/4"	3/4"	M10 (3/8")	S/B/GB/MB/G
SSJ1122	2" - 2 3/8"	3/4"	M10 (3/8")	S/B/GB/MB



2" Diameter

PART #	GT	L (Min. - Max. Length)	Glass Hole Size	Recommended Fastener	Available Finish
SSJ2112	12-19mm	1 1/2" - 1 3/4"	1"	M12 (1/2")	S/B/GB/G
SSJ22	12-22mm	2" - 2 3/8"	1"	M12 (1/2")	S/B/GB

APPLICATION & FASTENING OPTIONS FOR T3

CONCRETE APPLICATION

1 1/2" Diameter

Installation Option A: Threaded Rod with Epoxy

- SSKF381** SS threaded rod 3/8" x 5"
- SSNUT3816** SS nut 3/8" - 16
- PWS38VP** SS flat washer 3/8"
- FR5-10MX** FLO-ROK® epoxy (Fills 39 holes 7/16" x 4 1/2")

Installation Option B: Wedge Anchor

- ISS38334** SS wedge anchor 3/8" x 3 3/4"

2" Diameter

Installation Option A: Threaded Rod with Epoxy

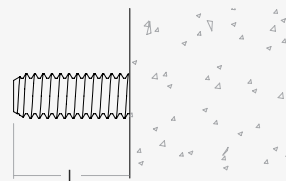
- SSKF121** SS threaded rods 1/2" x 5"
- SSNUT1213** SS nut 1/2"-13
- PWS12CT** SS flat washer 1/2"
- FR5-10MX** FLO-ROK® epoxy (Fills 28 holes 9/16" x 4 1/2")

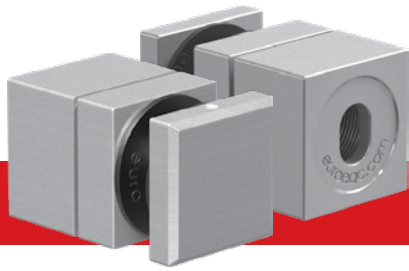
Installation Option B: Wedge Anchor

- ISS12334** SS wedge anchor 1/2" x 3 3/4"
- ISS12412** SS wedge anchor 1/2" x 4 1/2"

NOTE 3: Make sure the length of threaded rods or wedge anchors protruding from the surface matches size "L" shown in the chart below:

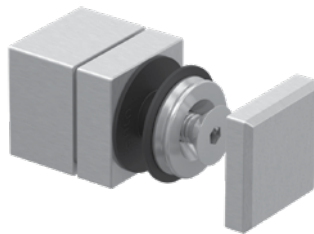
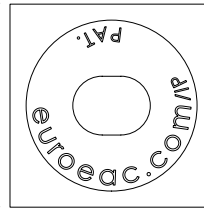
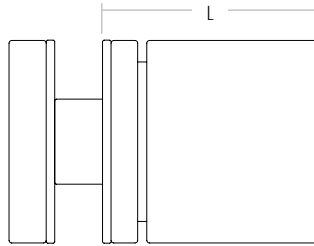
PART #	L	PART #	L
SSJ12114	9/16"	SSJQ112	3/4"
SSJ12112	5/8"	SSJ2112	3/4"
SSJ1122	3/4"	SSJ22	3/4"





T3

SLOTTED SQUARE



Easily installed with the convenience of an Allen key for effortless assembly.



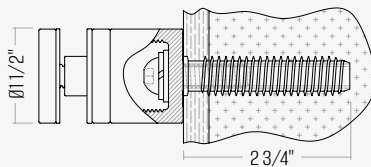
1 1/2" Square

PART #	L (Min. - Max. Length)	Glass Hole Size	Recommended Fastener	Available Finish
SSJQ112	1 1/2" - 1 3/4"	3/4"	M10 (3/8")	S/B/GB/G

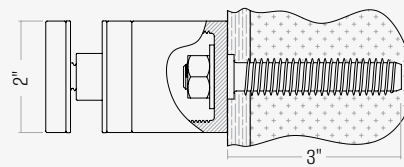
APPLICATION & FASTENING OPTIONS FOR T3

WOOD APPLICATION

1 1/2" Diameter



2" Diameter



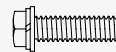
Standoffs are secured to wood insert by using the 3/8" machine screws below in conjunction with **SSKFW38234** below the screws.

For **SSJ11214**



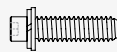
Use **SSFLPK1**
3/8" x 1/4"

For **SSJ11212**



Use **SSFLPK2**
3/8" x 1/4"

For **SSJ1122** or **SSJQ112**

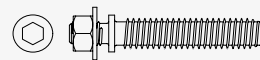


Use **SSFLPK3**
3/8" x 1/4"



Use **SSKFW38234** SS wood insert with above screws. See **Note 5**.

For **SSJ2112** or **SSJ22**



Use **SSJHB124SS** SS hanger bolt set

NOTE 4: Pilot hole for wood insert and hanger bolt set: Softwood: 1/2" • Hardwood: 3/7/64". When installed, our wood fasteners transfer the load to the wood structure without compressing the surface material such as drywall or siding.

Note 5: Using wood inserts eliminates compression on the surface and prevents cracks on drywall.

LOCKABLE T3 SERIES

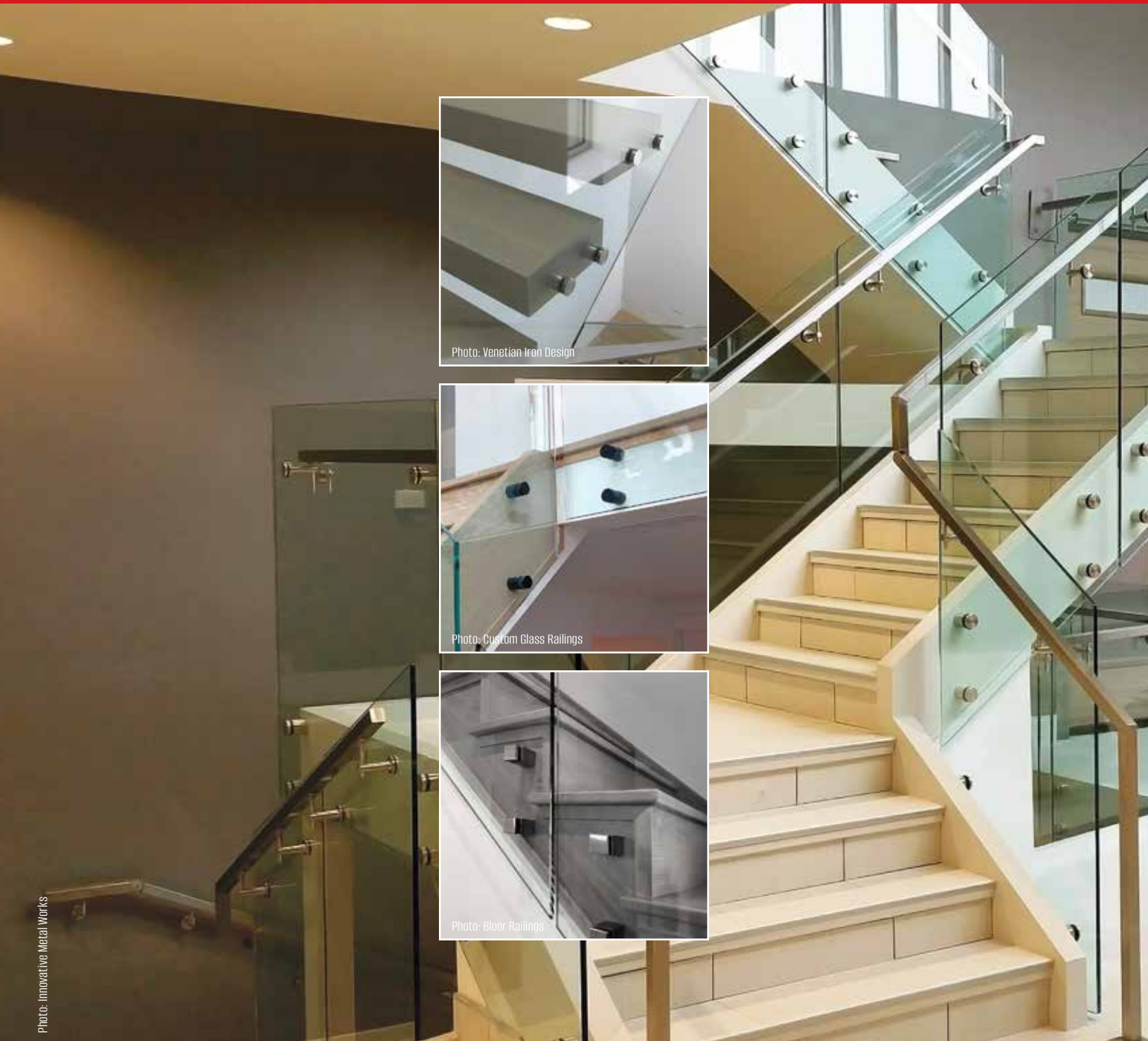


Photo: Innovative Metal Works