

HEAVY DUTY POSTS

Features



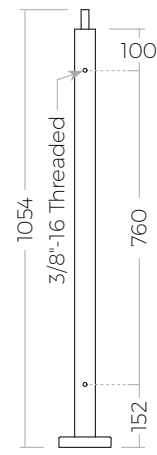
- Our **HEAVY DUTY** Stainless Steel Round and Square Posts are engineered for Interior and Exterior applications.
- Post material is **4.8mm** thick Tube in SS316 Satin finish.
- **End, Line, and Corner Posts** are designed for 1070mm (42 1/8") high **Landing** applications (with Handrail). Included with Posts: Fixed Tube Support at the top, and fully welded 12mm thick solid cast Stainless Steel Base Plate and Snap-fit Plate Cover at the bottom. Handrail Attachment Plates for Tube Support and End Cap sold separately. Leveling Plate also sold separately.
- **Blank Posts** are designed for **Stairway** applications. Included: Swivel Tube Support at the top. Handrail Attachment Plates for Tube Support and End Cap sold separately. All Post bottom options sold separately: Stanchion, Base Plate, Plate Cover, and Leveling Plate. Core Mount installation possible.
- Fully welded End Cap with Tube Support Adjustable by a max. of $\pm 10\text{mm}$.
- 3/8"-16 Tapped Holes on Posts suit a variety of Fittings to secure Glass Panels.



Scan to see more details online.

HEAVY DUTY POSTS

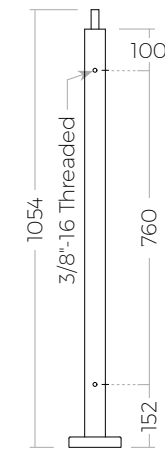
ROUND



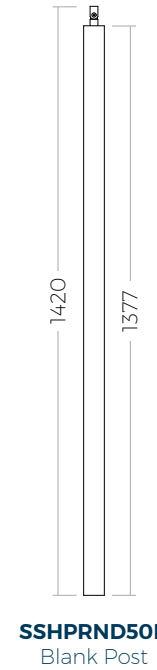
SSHPRND50E
End Post



SSHPRND50L
Line Post

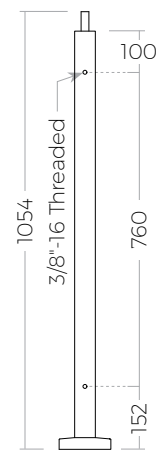


SSHPRND50C
Corner Post

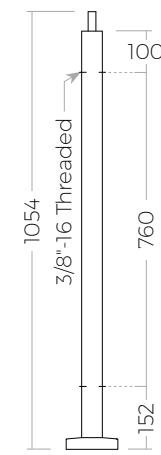


SSHPRND50B
Blank Post

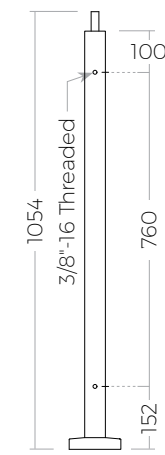
SQUARE



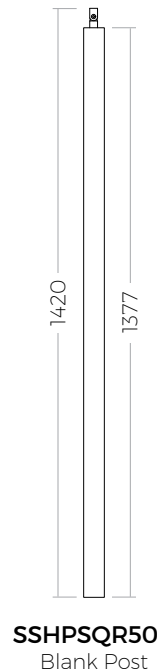
SSHPSQR50E
End Post



SSHPSQR50L
Line Post



SSHPSQR50C
Corner Post



SSHPSQR50B
Blank Post

We also offer custom design and manufacturing services tailored to meet the needs of your specific project requirements.

For more information, please contact engineering@euroeac.com.

COMPONENTS AND INSTALLATION METHODS

SOLD SEPARATELY

LANDING POSTS WITH WELDED BASES

Designed for End, Line, and Corner Post Configurations.



Tube Supports are included and are Adjustable $\pm 10\text{mm}$

SSHPRND50E
Fixed Tube Support

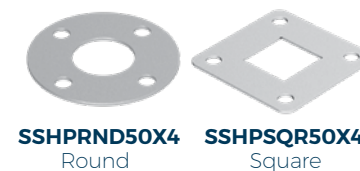
SSHPRND50B
Swivel Tube Support

3/8" - 16 Tapped Holes

Complete with Base Plate and Base Plate Cover

LEVELING PLATES AVAILABLE

SOLD SEPARATELY



SSHPRND50X4
Round

SSHPSQR50X4
Square

Options for Post Tops

HANDRAIL ATTACHMENT PLATES



SSHHPZAC05
Straight Flat



SSHHPZAC03
Straight Curved



SSHHPZAC06
90° Flat



SSHHPZAC04
90° Curved

END CAPS



SSHPRND50X2
Round



SSHPSQR50X2
Square

Options to Secure Glass Panels



OPTION A

Double Arm Glass Connectors
SSHHPZAC12 - Fixed
SSHHPZAC13 - Swivel



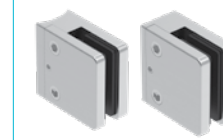
OPTION B

Straight Posts Spiders
SSHHPZAC08 - Double Arm
SSHHPZAC08 - Single Arm



Glass Connectors for Spider Arms

SSHHPZAC10 - Fixed
SSHHPZAC11 - Swivel
SSHHPZAC09 - Round Post Adapter Available



OPTION C

Glass Clips
SSHPRND50X1 - Round Posts
SSHPSQR50X1 - Square Posts

Options to Secure Blank Posts

Can be Core Mounted or secured with options below.



STANCHIONS

Used with Epoxy
SSHPRND50X6 - Round
SSHPSQR50X6 - Square

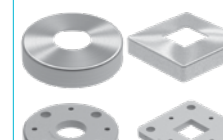
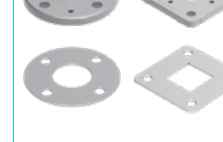


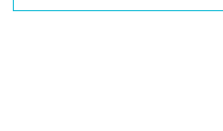
PLATE COVER

SSHPRND50X5 - Round
SSHPSQR50X5 - Square



WELDED BASE PLATE

SSHPRND50X3 - Round
SSHPSQR50X3 - Square

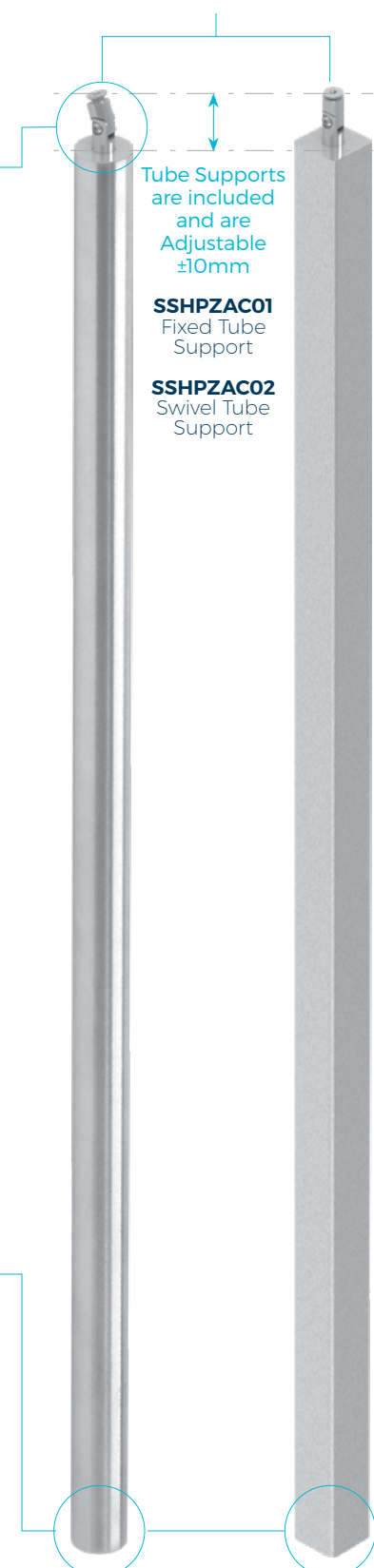


LEVELING PLATE

SSHPRND50X4 - Round
SSHPSQR50X4 - Square

BLANK POSTS

Designed for Stair and Core Mount Installations.



Tube Supports are included and are Adjustable $\pm 10\text{mm}$

SSHPRND50E
Fixed Tube Support

SSHPRND50B
Swivel Tube Support