

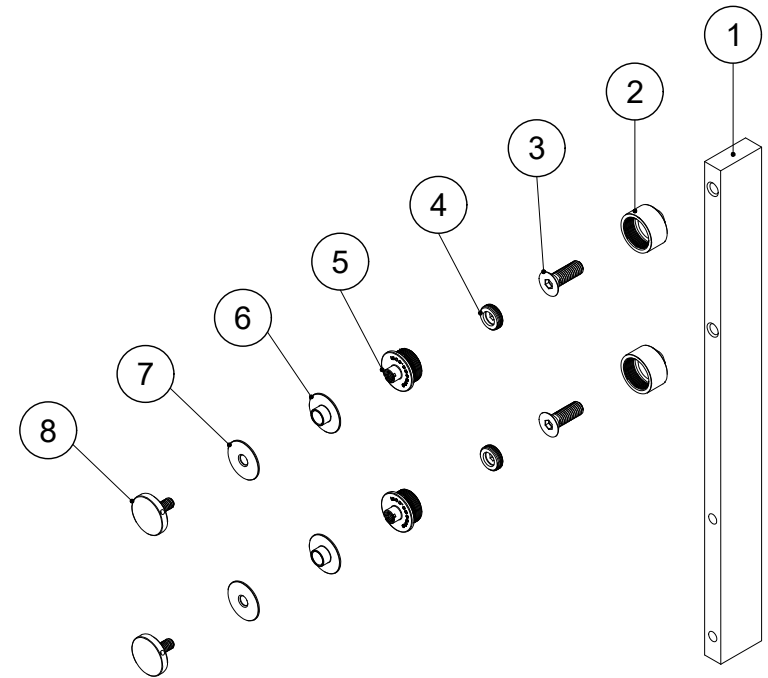
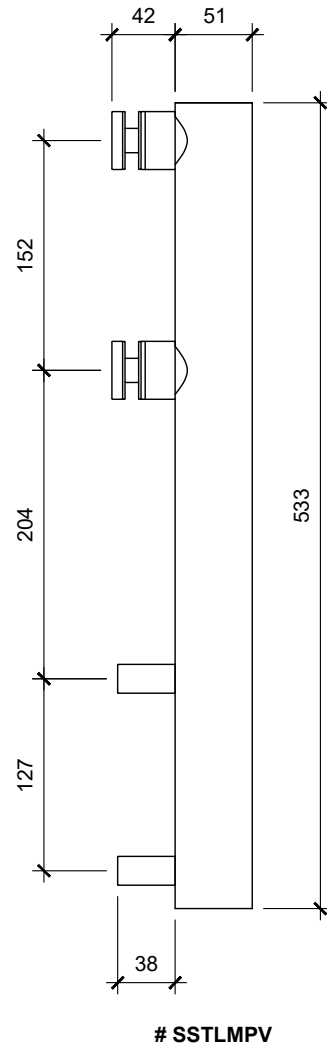
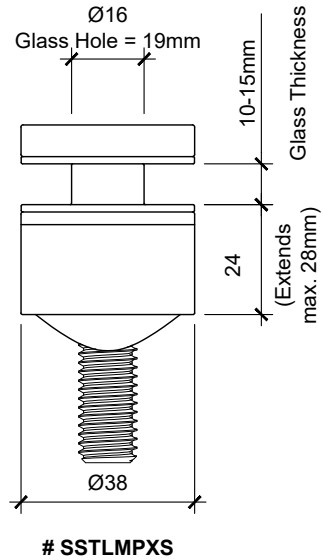
What's in the box?

- 1 pc. Side Mount Mini Post
- 2 pcs. Tilt-Lock Mini post Adjustable Round Standoff with Screw
- 2 pcs. Side Mount Mini Post Spacer



How to install the Standoffs?

1. Position the post vertically for the standoff installation and locate the side with 2 blind holes.
2. Place and align the standoff retainer into the post's blind hole .
3. Use the included fastener to secure the retainer into the post.
4. Screw-in the standoff lock into the retainer.
5. Install the stand-off telescope into the retainer.
6. Insert the first plastic gasket into the lip of the telescope.
7. Insert the second plastic gasket into the lip of the standoff cap (8).
8. Secure the standoff cap into the telescope once the glass panel is set in place.



How to install the posts?

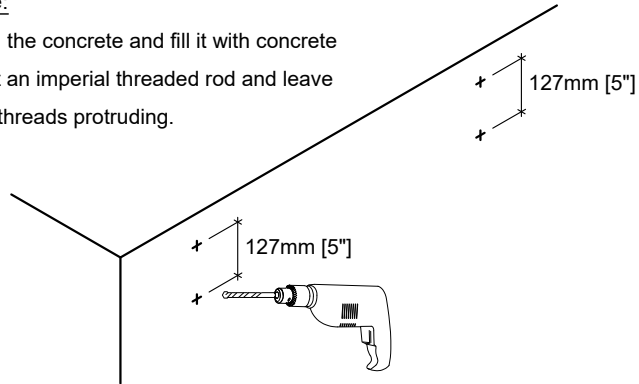
A. Layout and mark the hole positions according to the allowable spacing.

B. For Wood:

Provide adequate blocking for wood and drill a pilot hole for the imperial hanger bolt and leave 14-16mm of hanger bolt threads protruding.

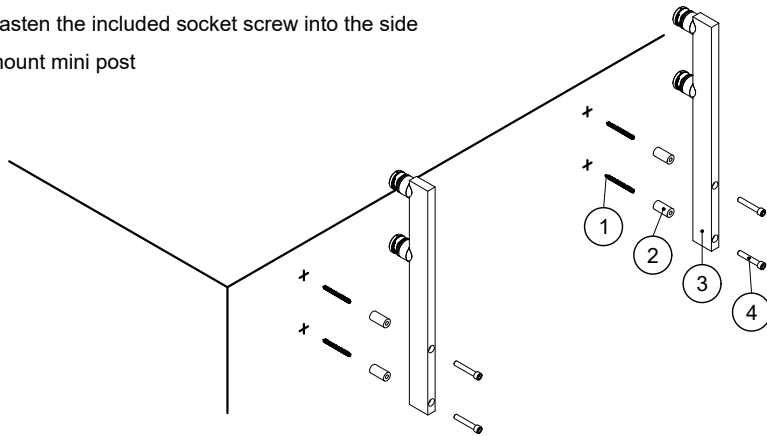
For Concrete:

Drill a hole in the concrete and fill it with concrete epoxy. Insert an imperial threaded rod and leave 14-16mm of threads protruding.



C. Follow the sequence below for the installation of the side mount mini post:

1. Install an imperial fastener with appropriate length and leave 14-16mm of fastener protruding.
2. Screw-in the spacer into the fastener
3. Align the side mount mini post
4. Fasten the included socket screw into the side mount mini post

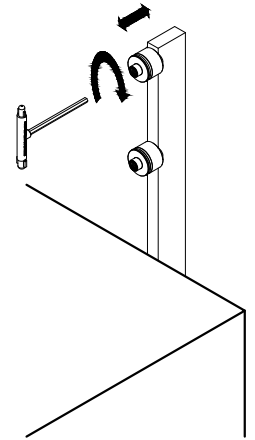


D. Ensure that the standoffs are leveled and straight prior to installing glass panels. If not straight, standoffs can be adjusted horizontally by a maximum of 4mm [5/32"].

E. Lock the standoffs once the level is verified using Euro standoff tool or 6mm Allen key by turning clockwise.



4mm Max.



F. Position the glass panel with Ø19mm predrilled holes into the standoff along with the included gasket.

G. Install the standoff cap to finish the job and tighten it by using 1 1/2" Euro standoff cap spanner.

