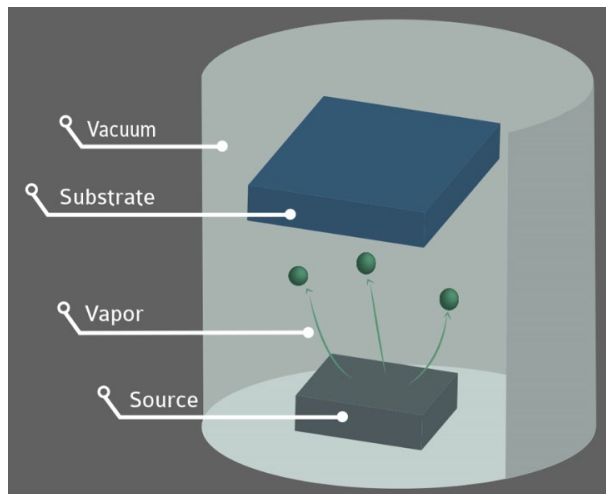


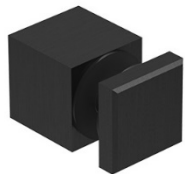
## PVD

- The coating is metallic.
- Available in a unique Graphite Black and Matte Black.
- Suitable for interior and exterior applications. Will last longer than powder coated items.
- More scratch-resistant than powder coated.
- No touch-up spray. If scratch occurs, it is not easily repaired.
- Environmentally friendly. The colouring process does not limit the recycling value of the stainless steel.
- Process: Chemicals are shot at the stainless steel in a vacuum chamber. This shoots the coating into the metal.



### Applications:

Architectural Components, Tools, Medical Tools, Jewellery, etc.



## Powder Coated

- The coating is polymer.
- Available in Satin Black and Textured Black.
- Suitable for interior and exterior applications, but PVD will hold up better over time for outdoors.
- Not as scratch-resistant as PVD.
- Can touch up scratches using touch-up spray.
- Process: Coloured powder is baked onto the stainless steel in an oven.

### Applications:

It is a standard painting process for all metal works for steel. However, it is tricky to be applied on stainless steel because surface preparation is harder for painting.

