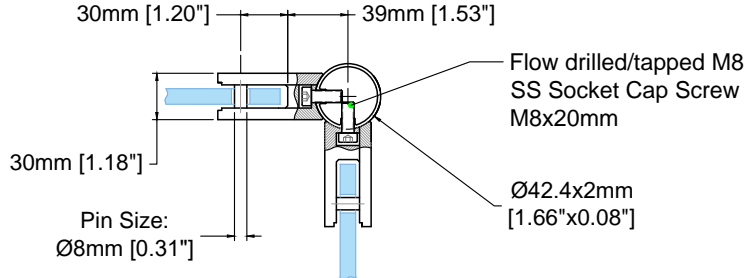
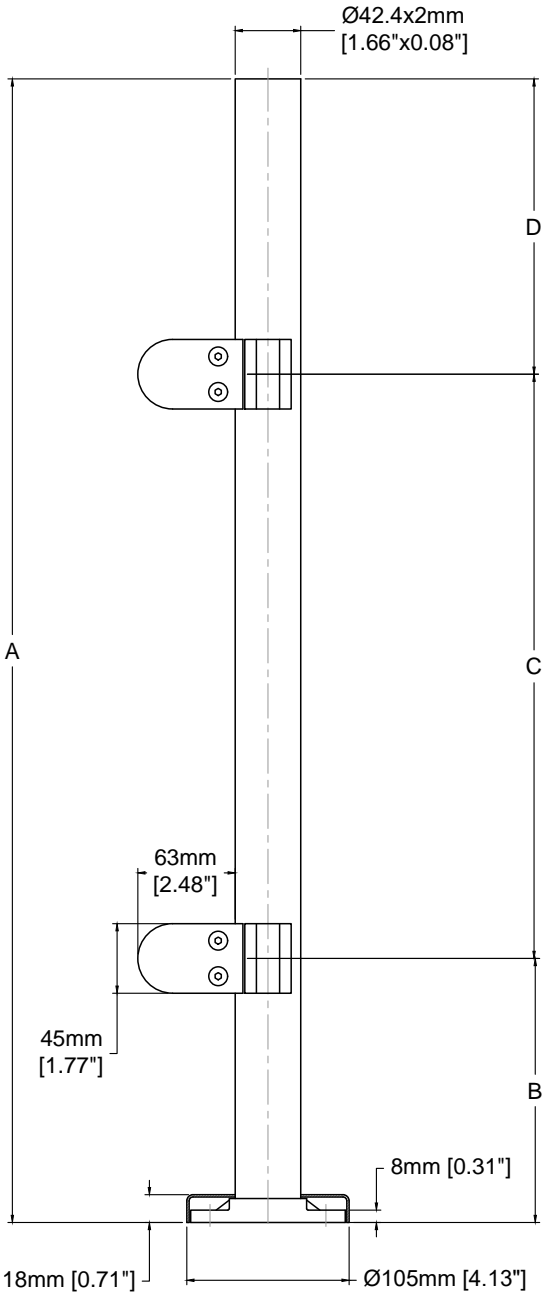
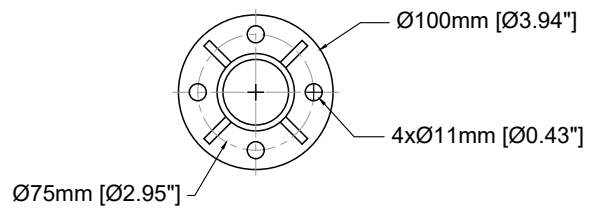


Note:

- All posts are SS316.
- Gaskets for glass thickness 10mm and 12mm included.



Typical Section



Base Plate

| Product Code | A mm [in] | B mm [in] | C mm [in] | D mm [in] |
|--------------|-----------------|-----------------|-----------------|-----------------|
| SSPG166L36C | 811 [31.9] | 248 [9.8] | 317 [12.5] | 246 [9.7] |
| SSPG166S40C | 913 [35.9] | 248 [9.8] | 411 [16.2] | 254 [10.0] |
| SSPG166L42C | 963 [37.9] | 248 [9.8] | 469 [18.5] | 246 [9.7] |